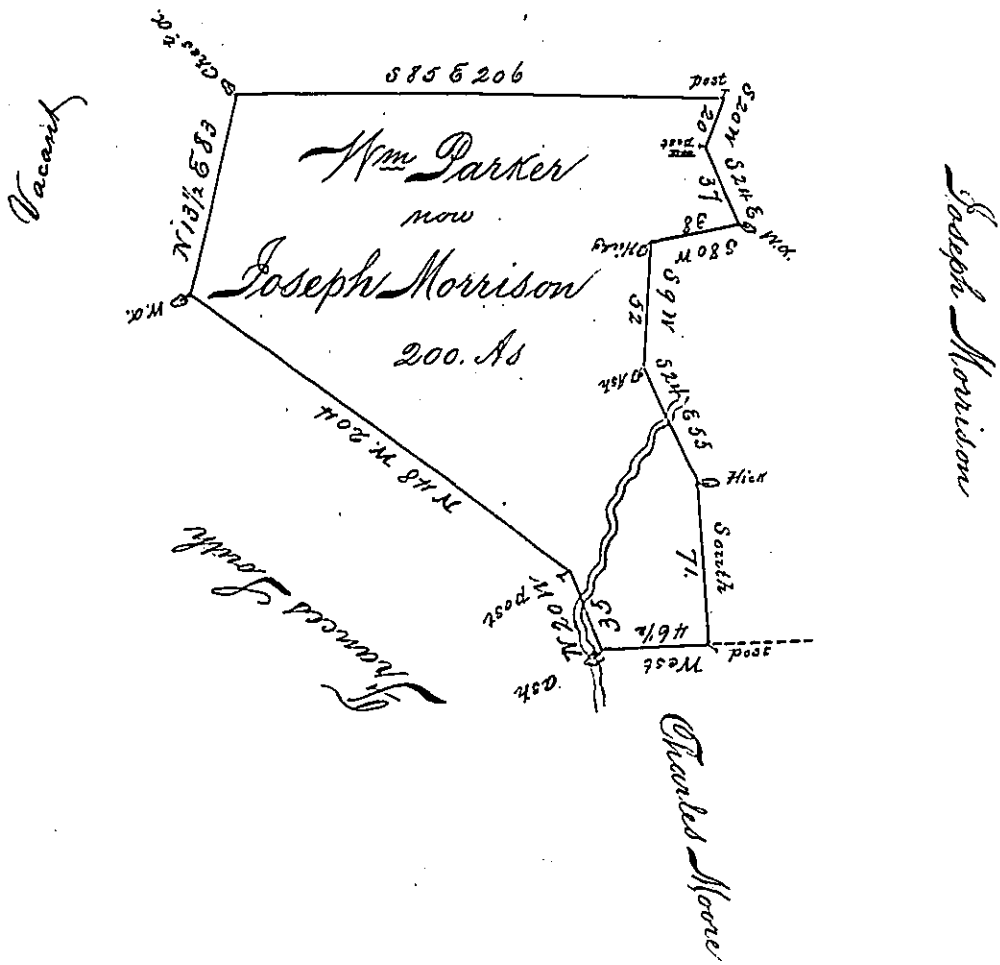


Duning's Mountain



A Draught of Land Situate on Trustees Run Providence
 Bedford County
 Township, containing Three hundred acres & usual Allow-
 ance &c Surveyed December 18th 1787 In pursuance of
 an ~~Order~~ ^{Warrant} of Survey Granted in the Name of Wm Parker
 dated the 7th of July 1762

George Woods D.S.

John Lukens, Esq. S. G.

IN TESTIMONY that the above is a copy of the original remaining on file in the
 Department of Internal Affairs of Pennsylvania, made con-
 formably to an Act of Assembly approved the 16th day of
 February, 1833, I have hereunto set my Hand and caused
 the Seal of said Department to be affixed at Harrisburg, this

third day of September 1895.

James W. Latta
 Secretary of Internal Affairs.